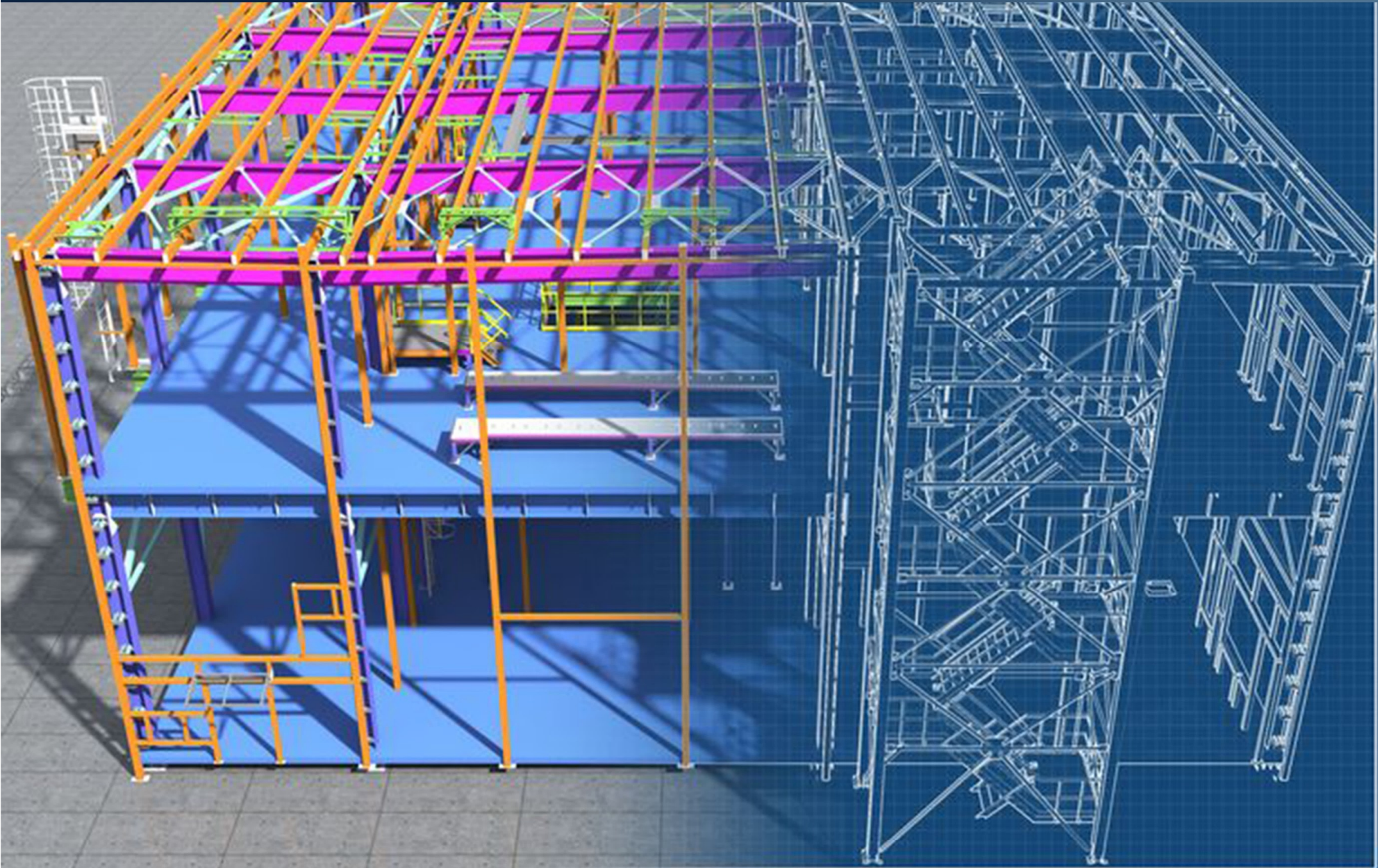
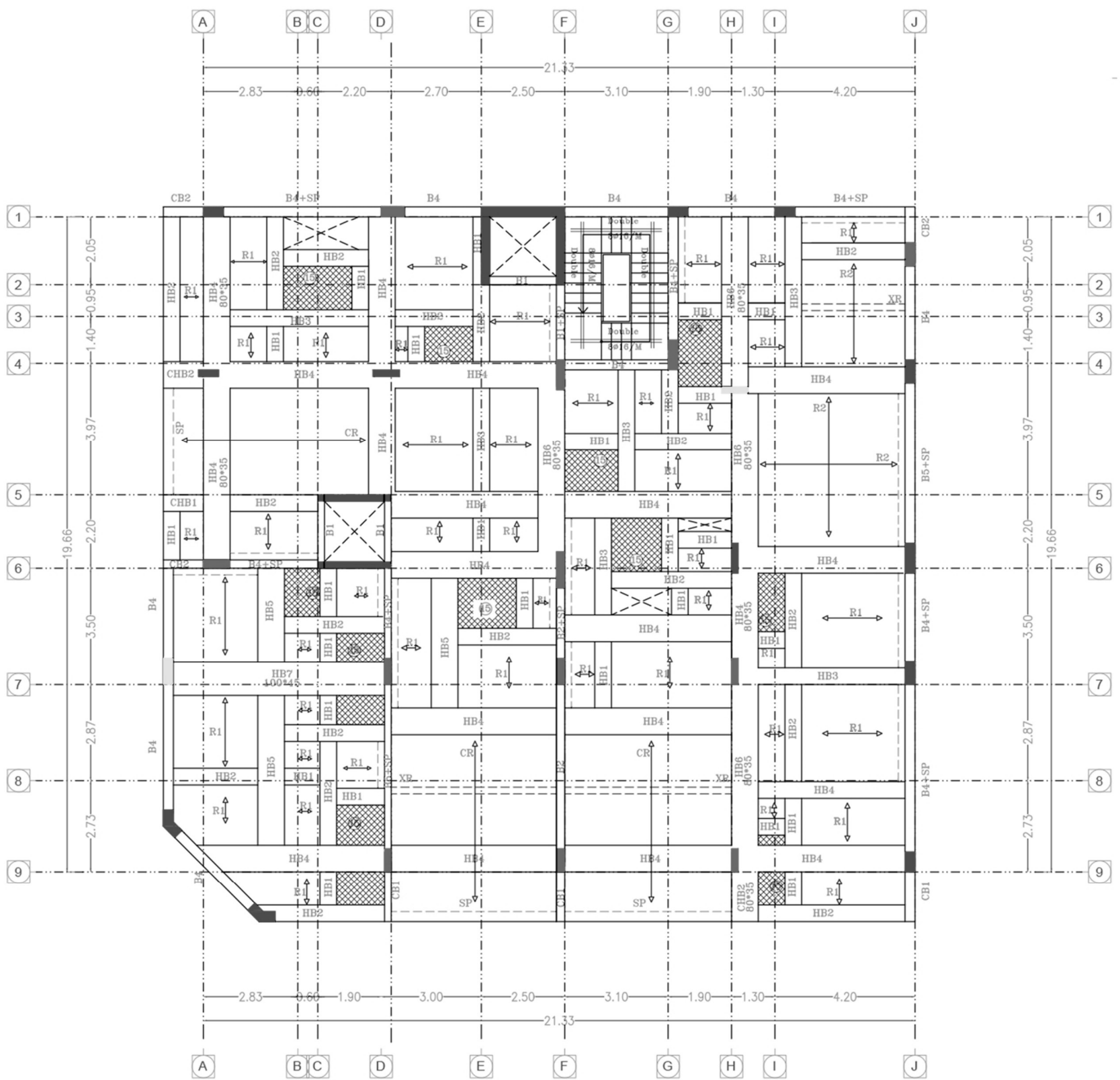
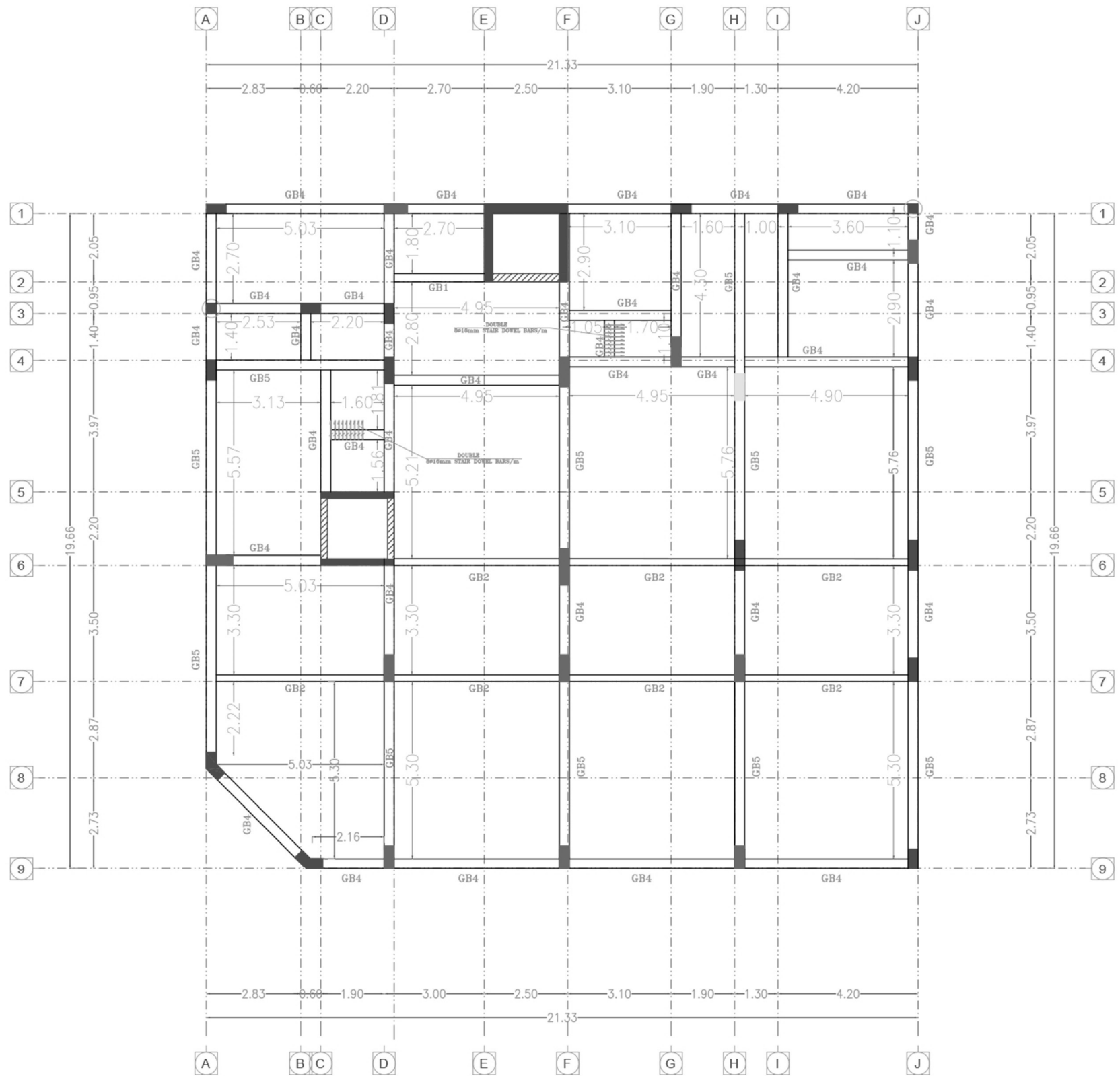
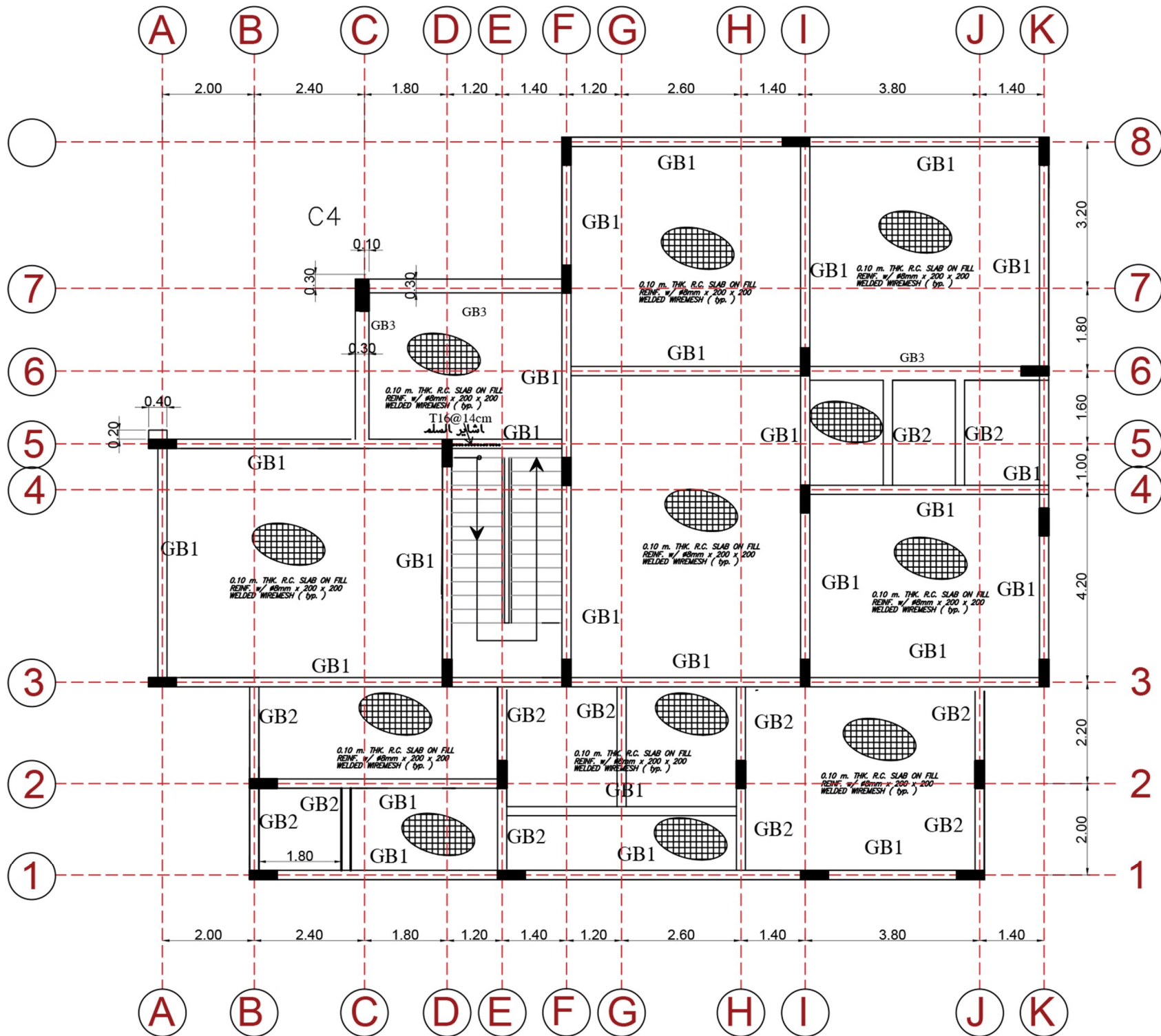


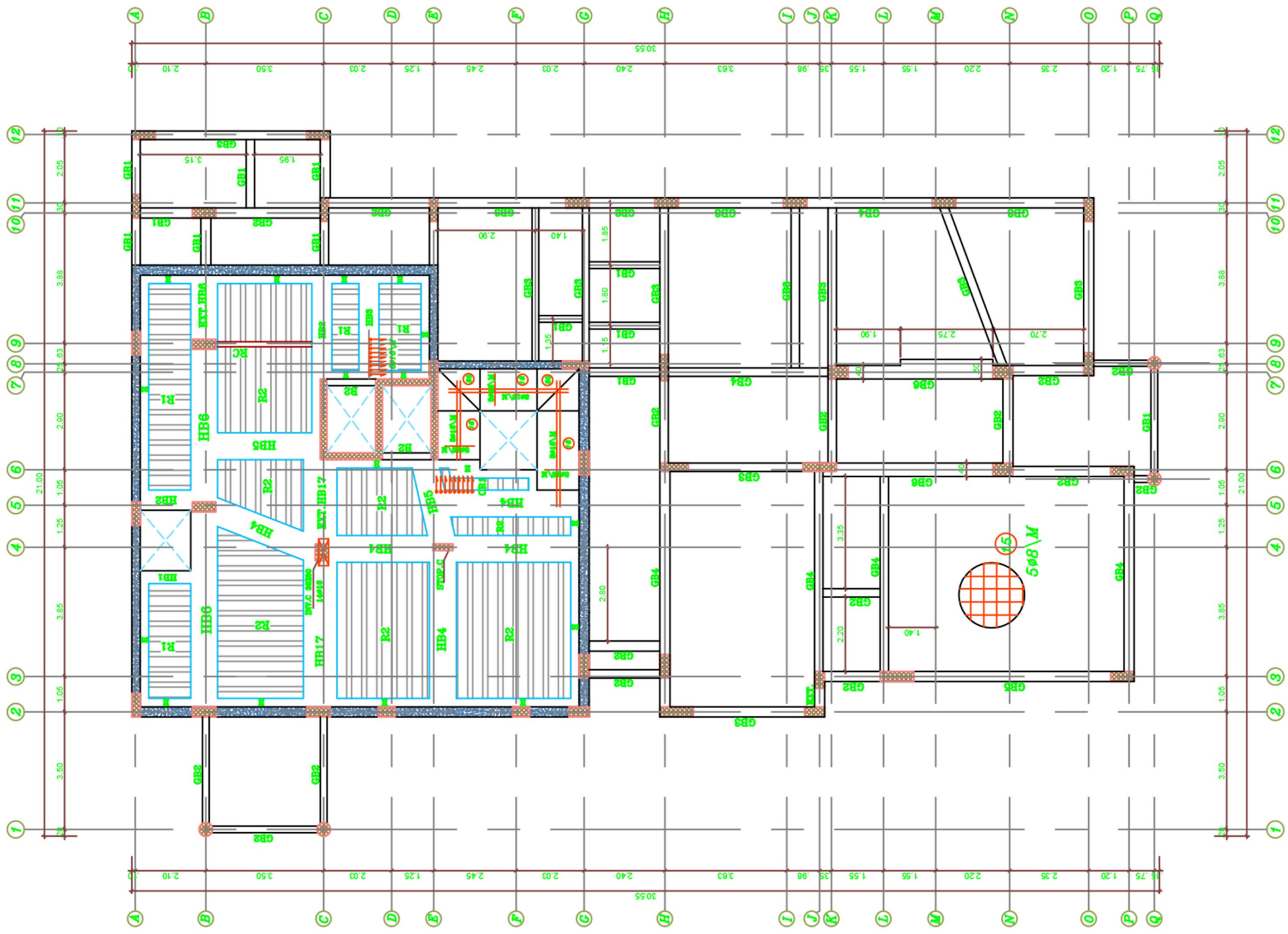
Structure

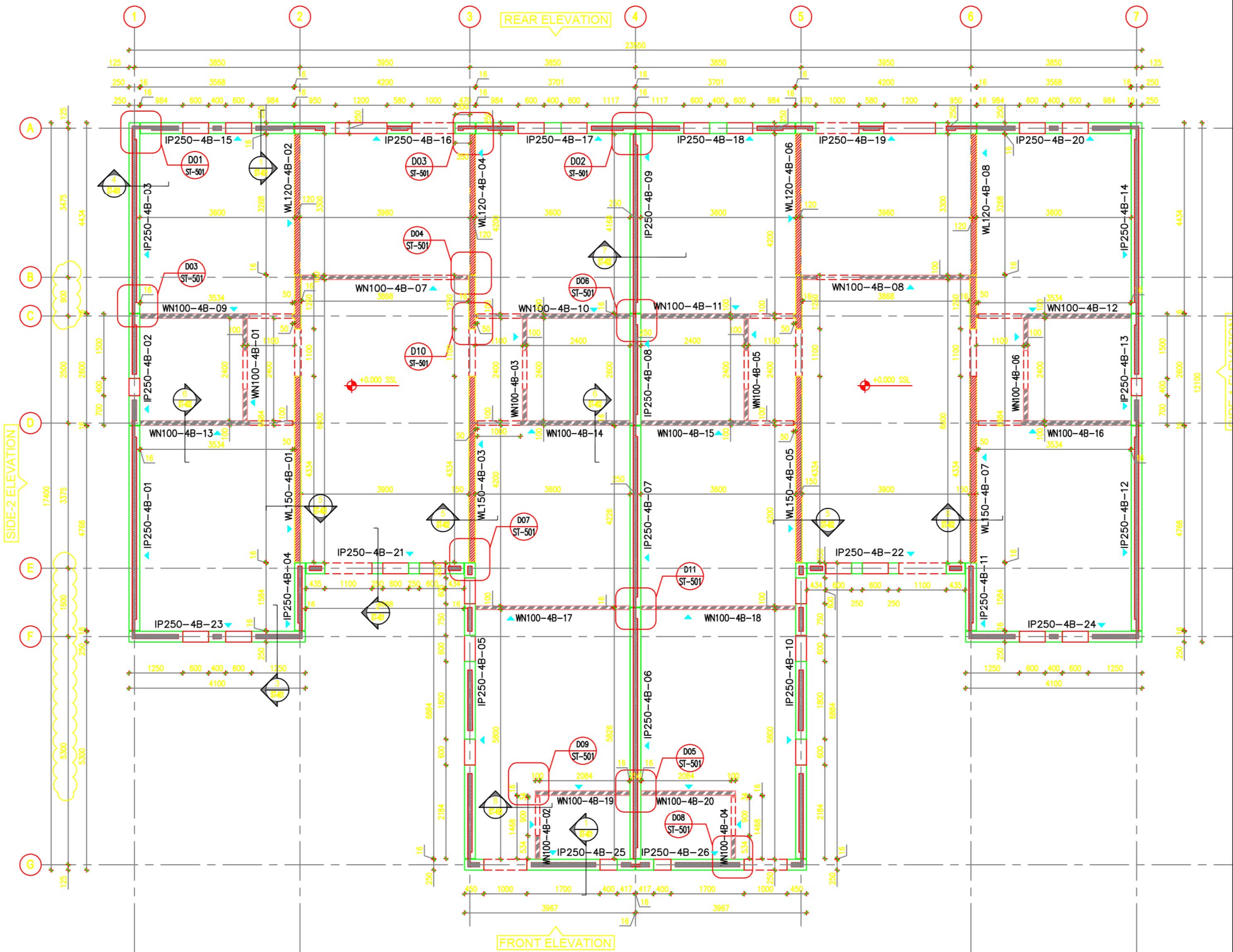




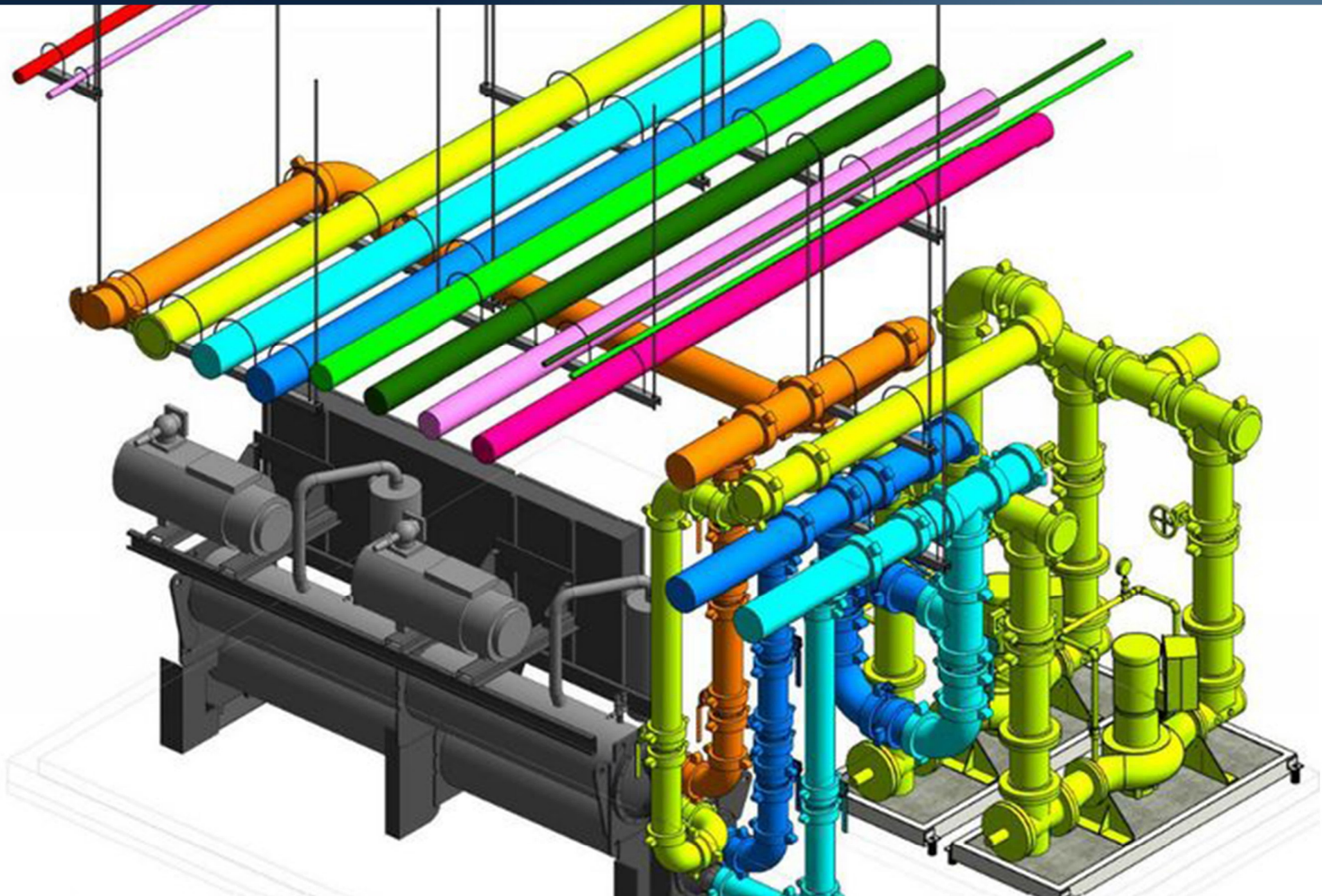


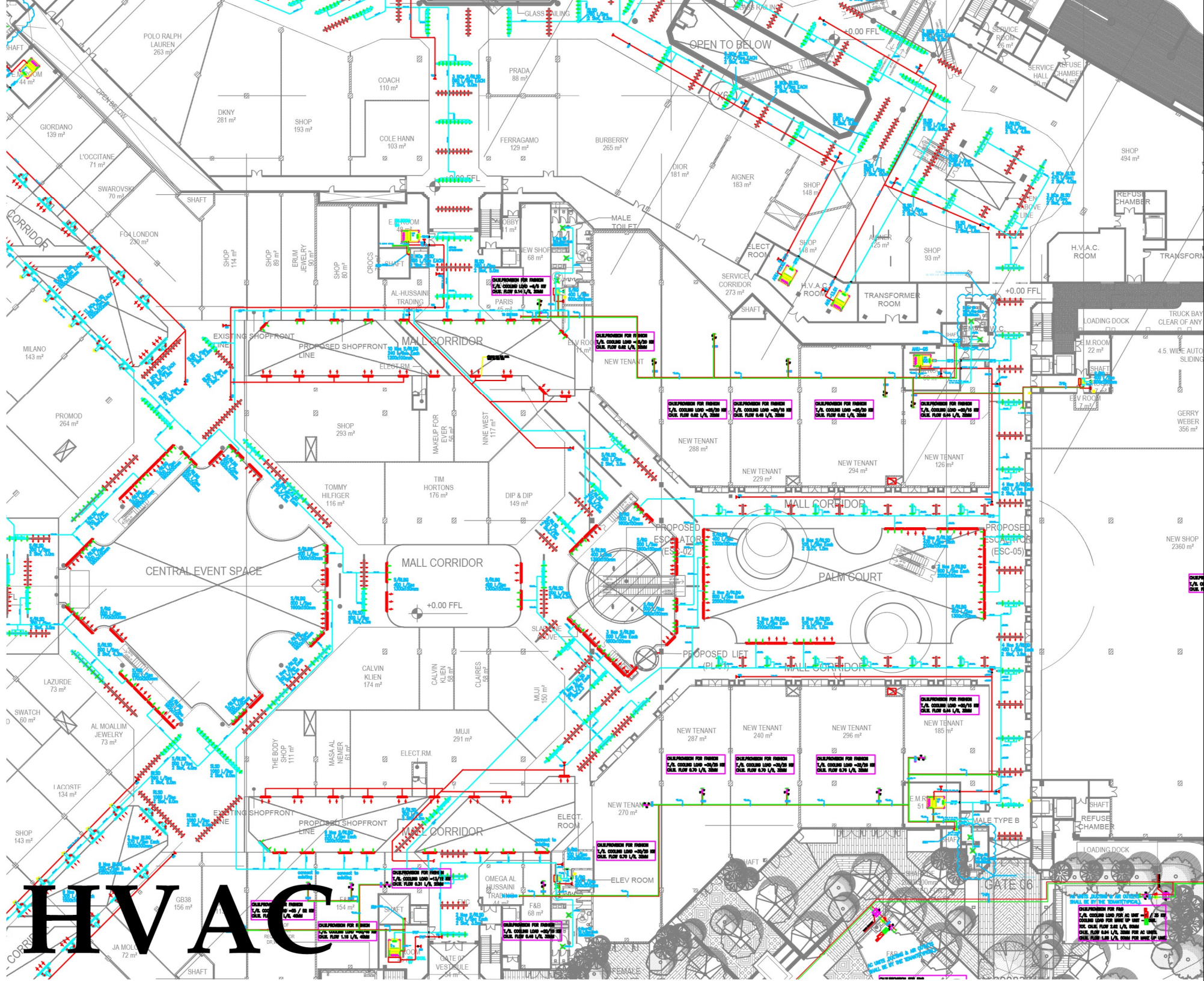






Mechanical





HVAC

GB38
156 m²

CALCULATION FOR FRESH T/A COOLING LOAD = 45/20 W
CHILL. FLOW 0.14 L/S, 2000

CALCULATION FOR FRESH T/A COOLING LOAD = 45/20 W
CHILL. FLOW 0.14 L/S, 2000

CALCULATION FOR FRESH T/A COOLING LOAD = 45/20 W
CHILL. FLOW 0.14 L/S, 2000

CALCULATION FOR FRESH T/A COOLING LOAD = 45/20 W
CHILL. FLOW 0.14 L/S, 2000

CALCULATION FOR FRESH T/A COOLING LOAD = 45/20 W
CHILL. FLOW 0.14 L/S, 2000

CALCULATION FOR FRESH T/A COOLING LOAD = 45/20 W
CHILL. FLOW 0.14 L/S, 2000

CALCULATION FOR FRESH T/A COOLING LOAD = 45/20 W
CHILL. FLOW 0.14 L/S, 2000

CALCULATION FOR FRESH T/A COOLING LOAD = 45/20 W
CHILL. FLOW 0.14 L/S, 2000

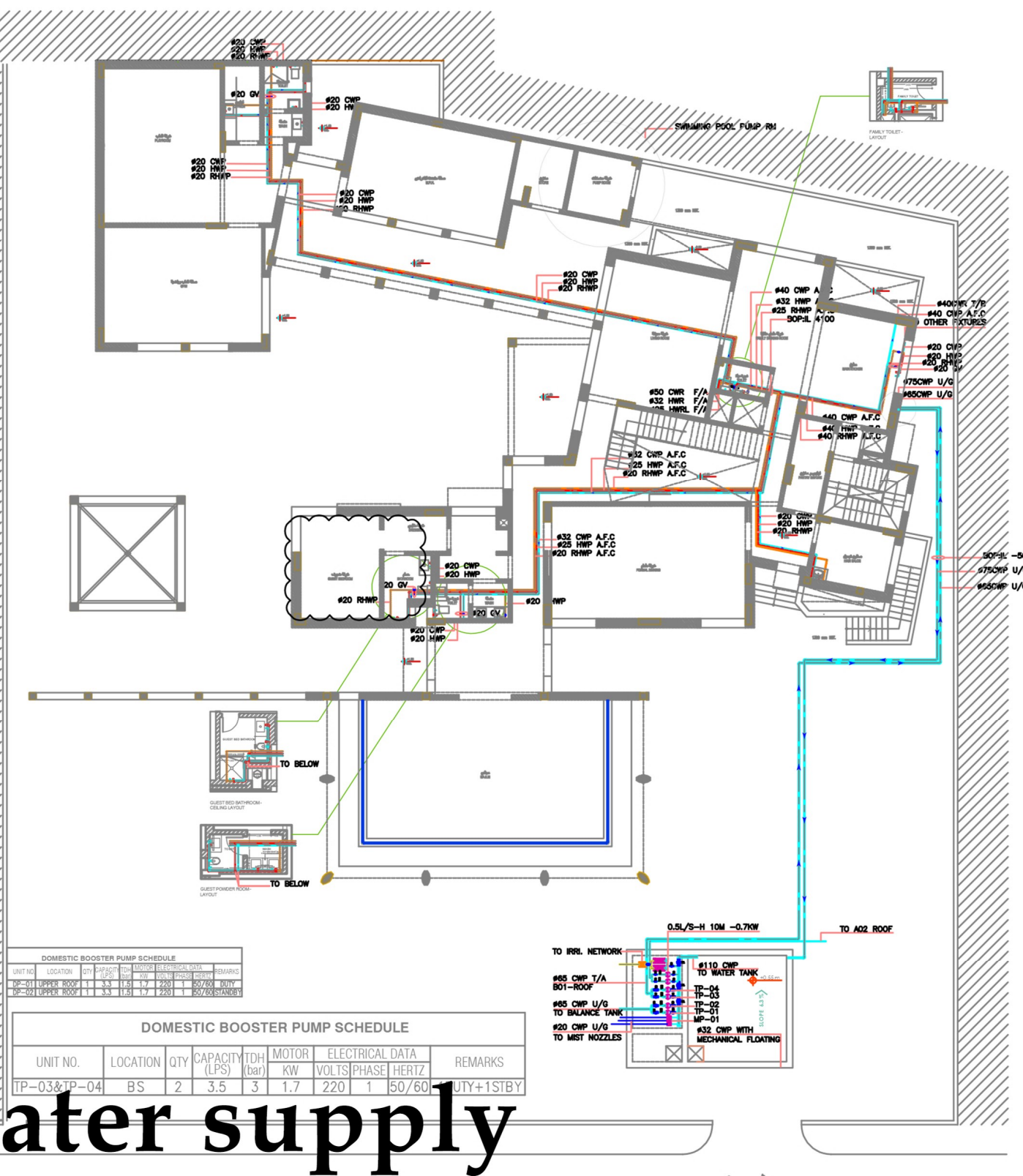
CALCULATION FOR FRESH T/A COOLING LOAD = 45/20 W
CHILL. FLOW 0.14 L/S, 2000

CALCULATION FOR FRESH T/A COOLING LOAD = 45/20 W
CHILL. FLOW 0.14 L/S, 2000

CALCULATION FOR FRESH T/A COOLING LOAD = 45/20 W
CHILL. FLOW 0.14 L/S, 2000

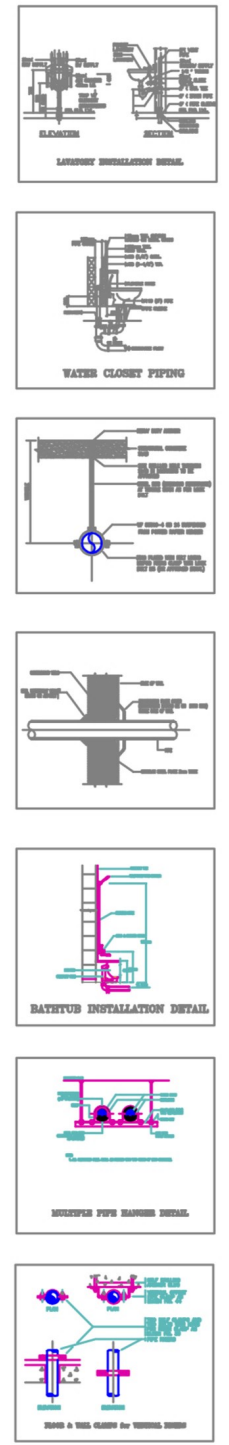
CALCULATION FOR FRESH T/A COOLING LOAD = 45/20 W
CHILL. FLOW 0.14 L/S, 2000

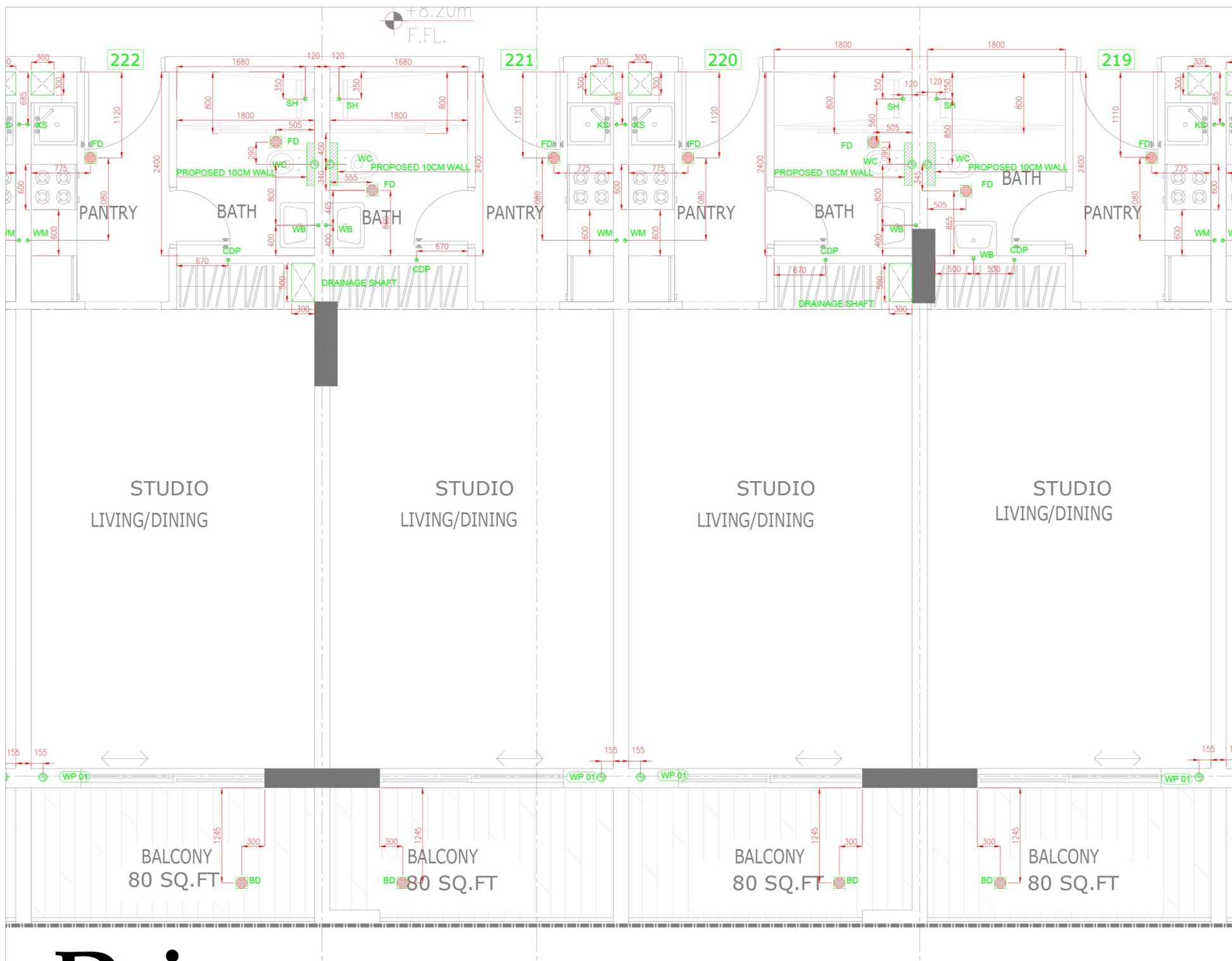
Water supply



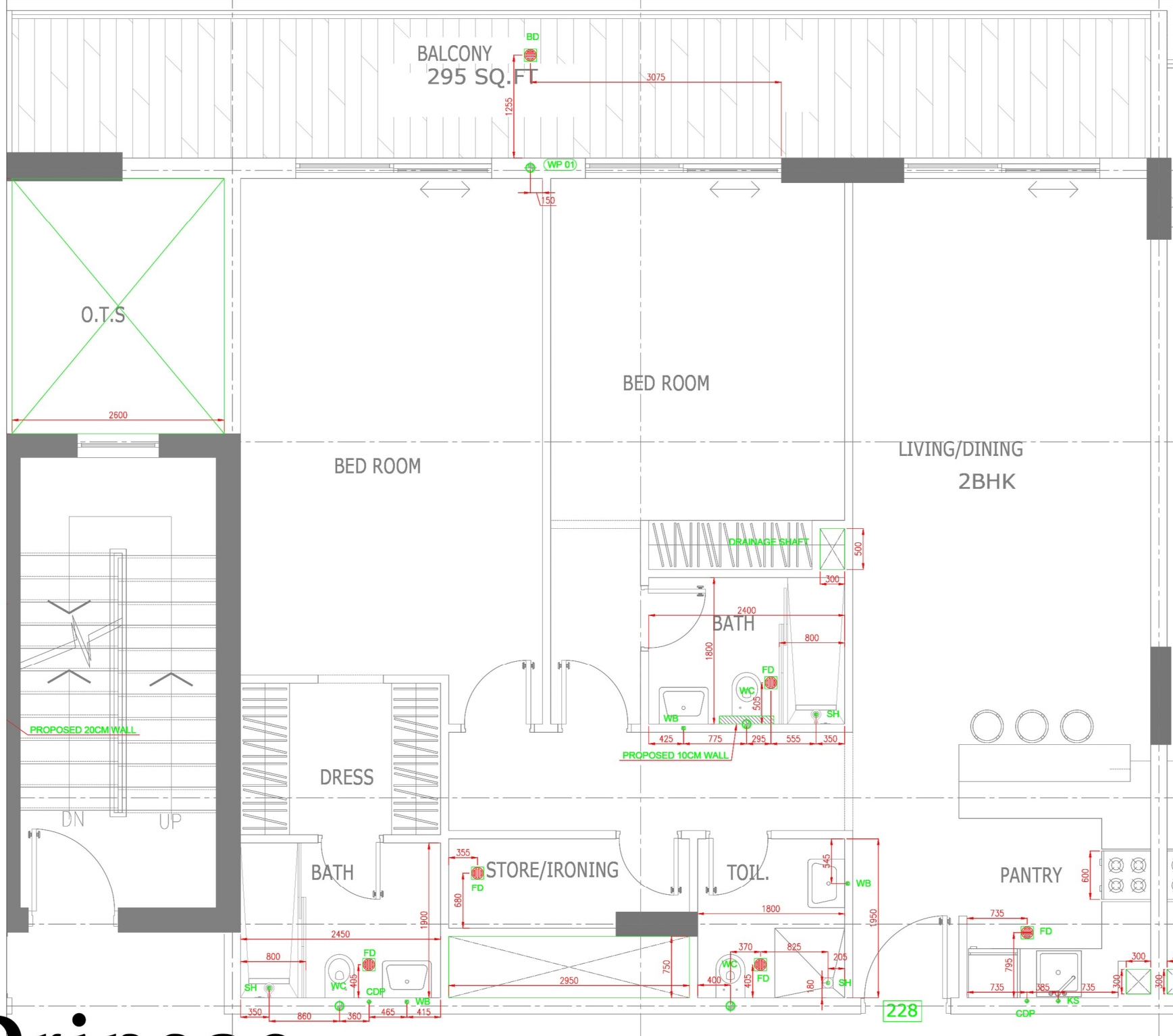
DOMESTIC BOOSTER PUMP SCHEDULE

UNIT NO.	LOCATION	QTY	CAPACITY (LPS)	TDH (bar)	MOTOR KW	ELECTRICAL DATA VOLTS PHASE HERTZ	REMARKS
TP-03&TP-04	BS	2	3.5	3	1.7	220 1 50/60	DUTY+1STBY

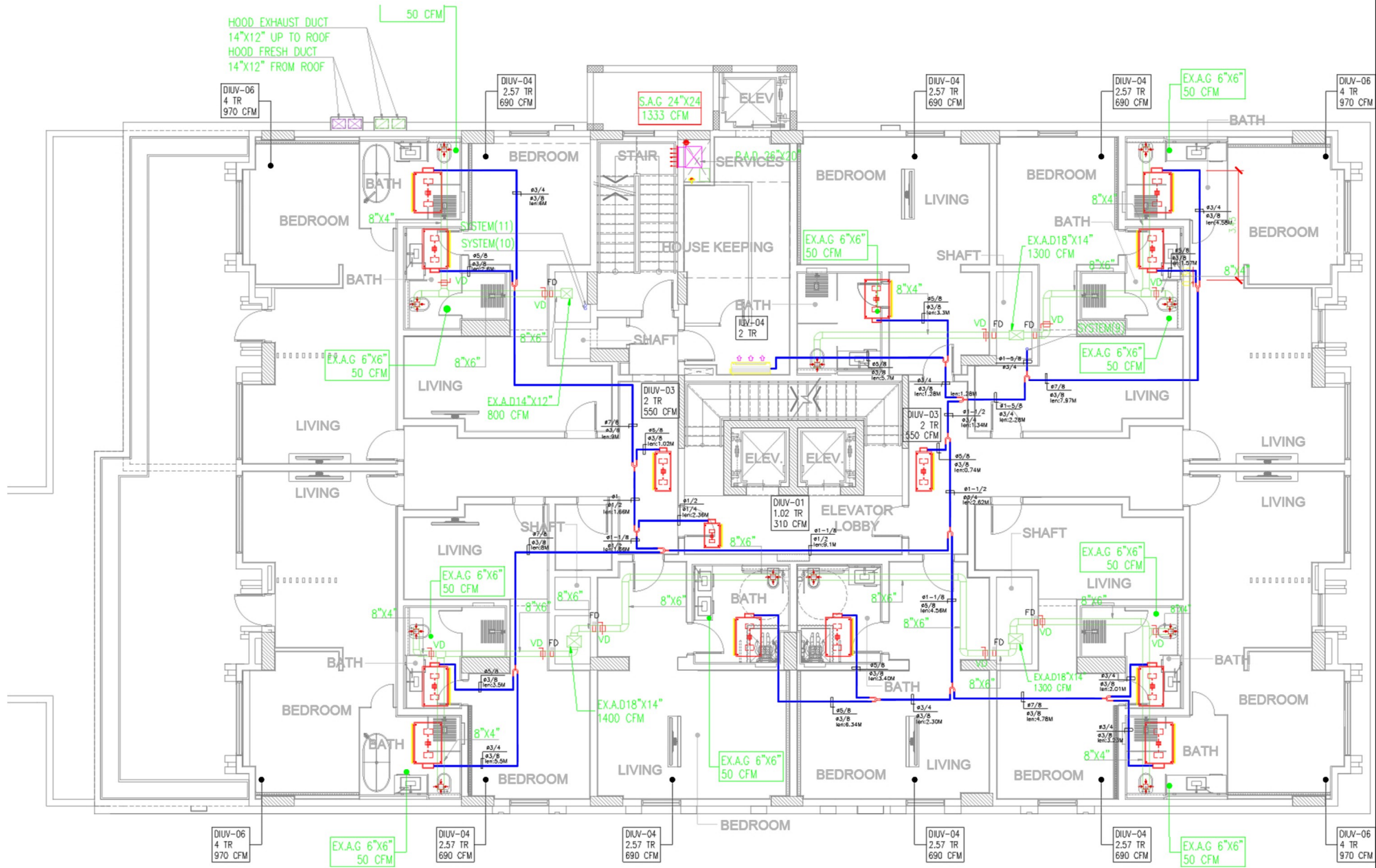




Drainage

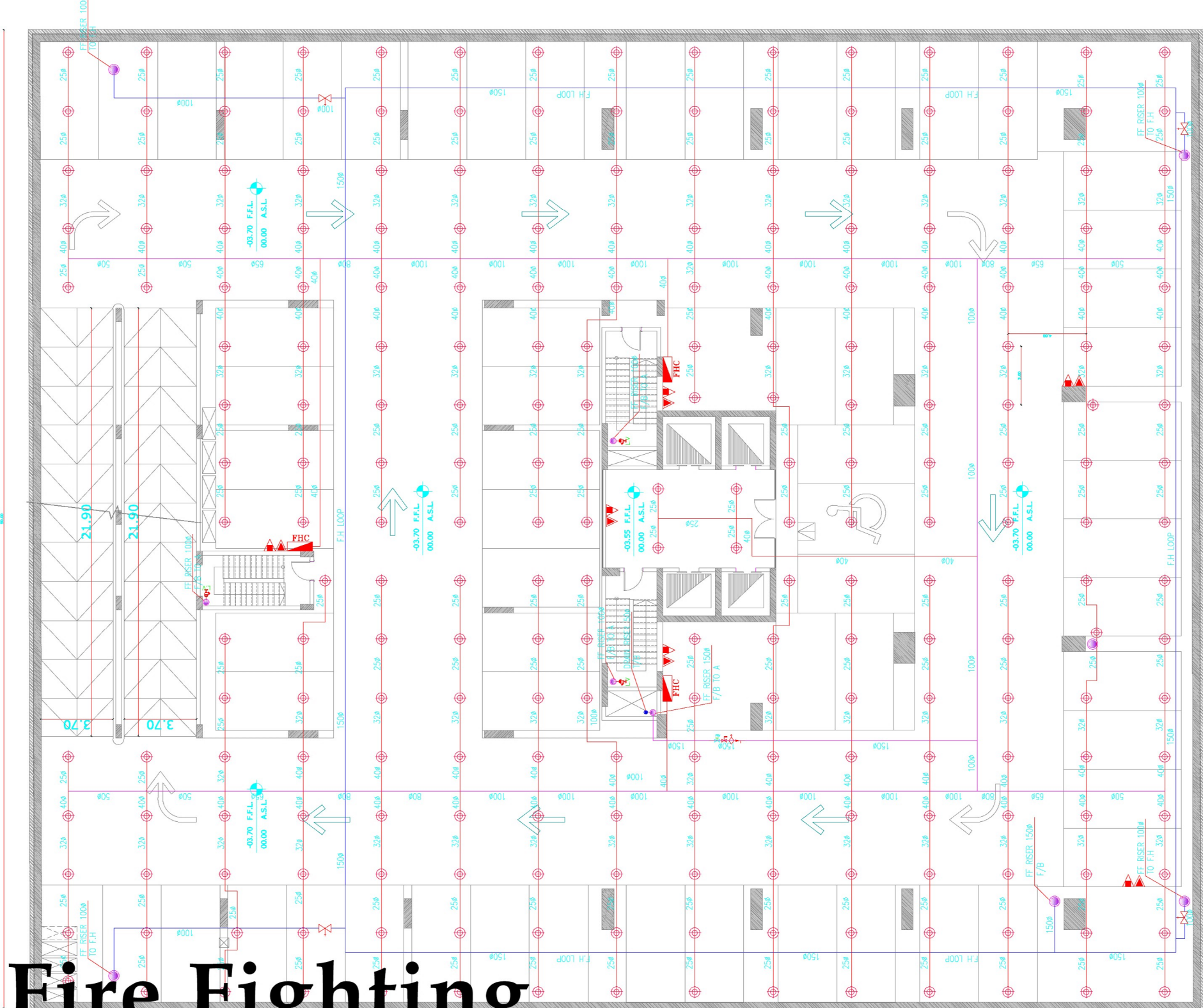


Drinage

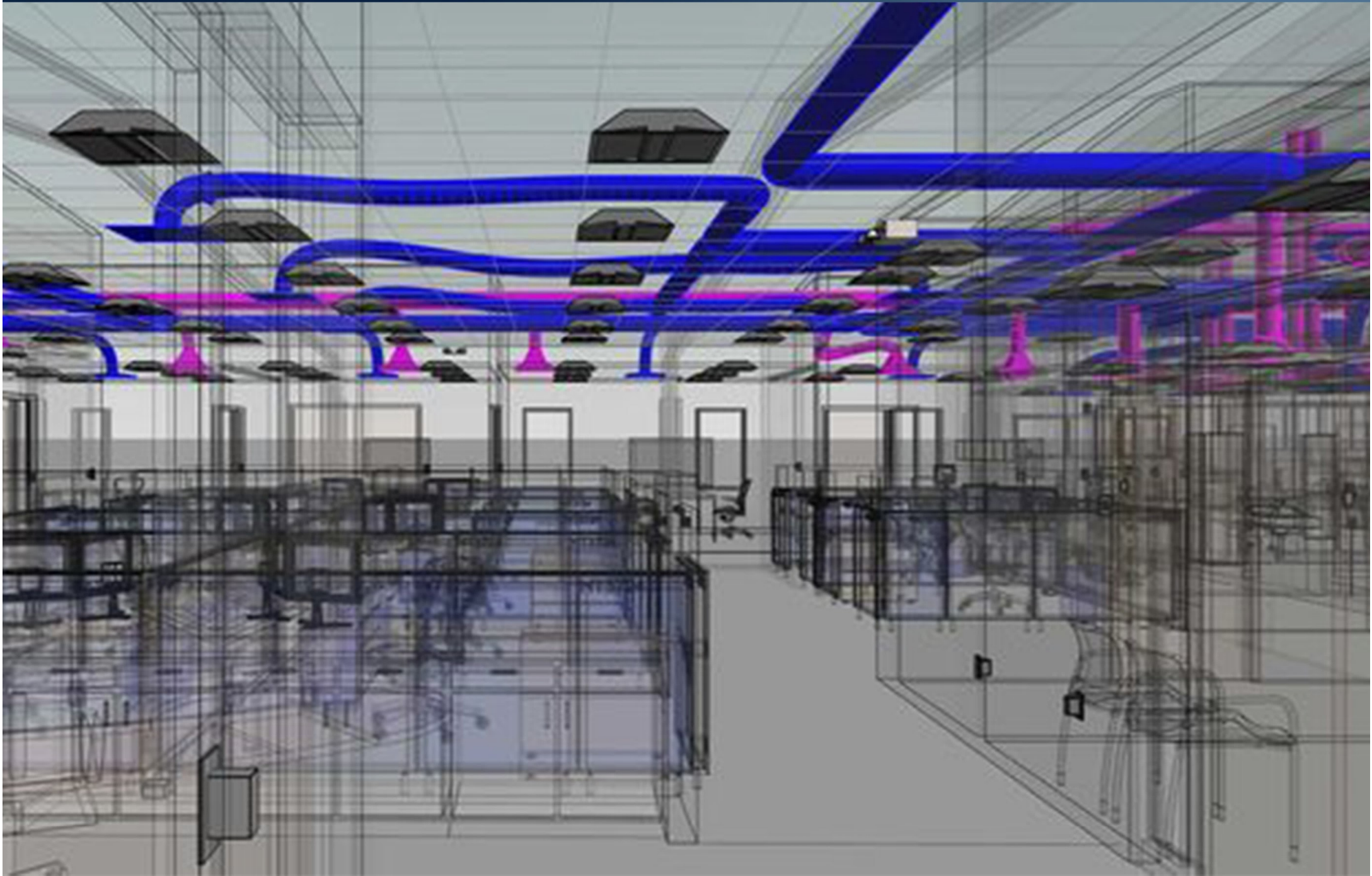


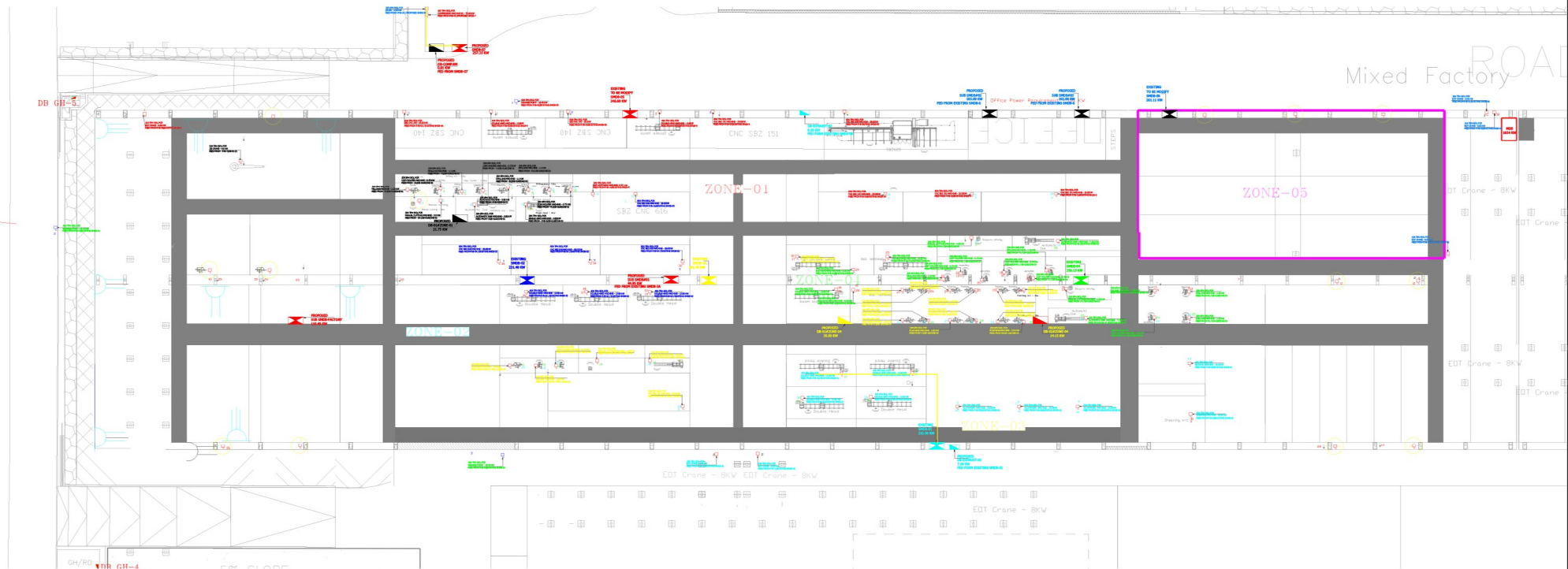
HVAC

Fire Fighting

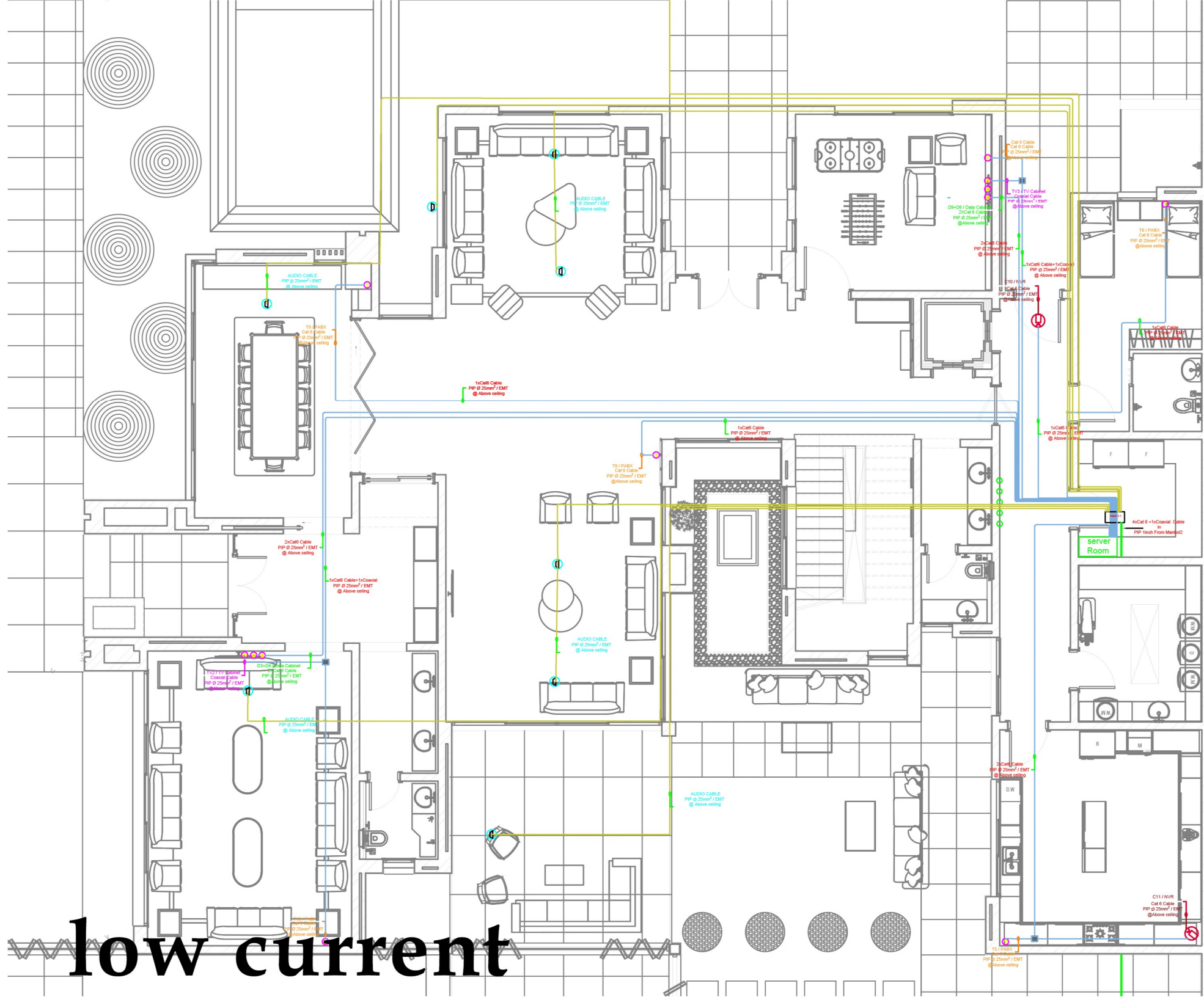


Electrical

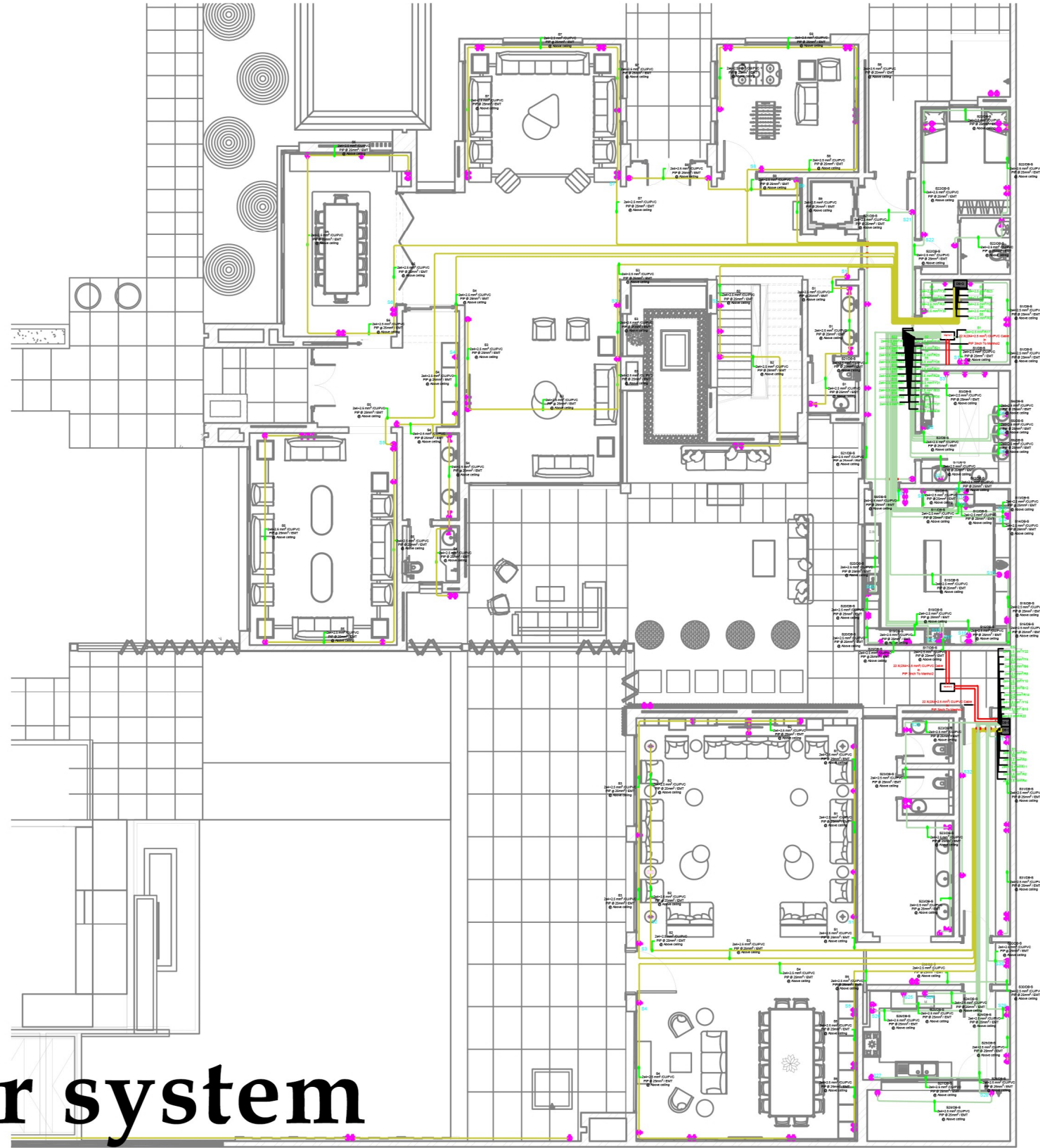




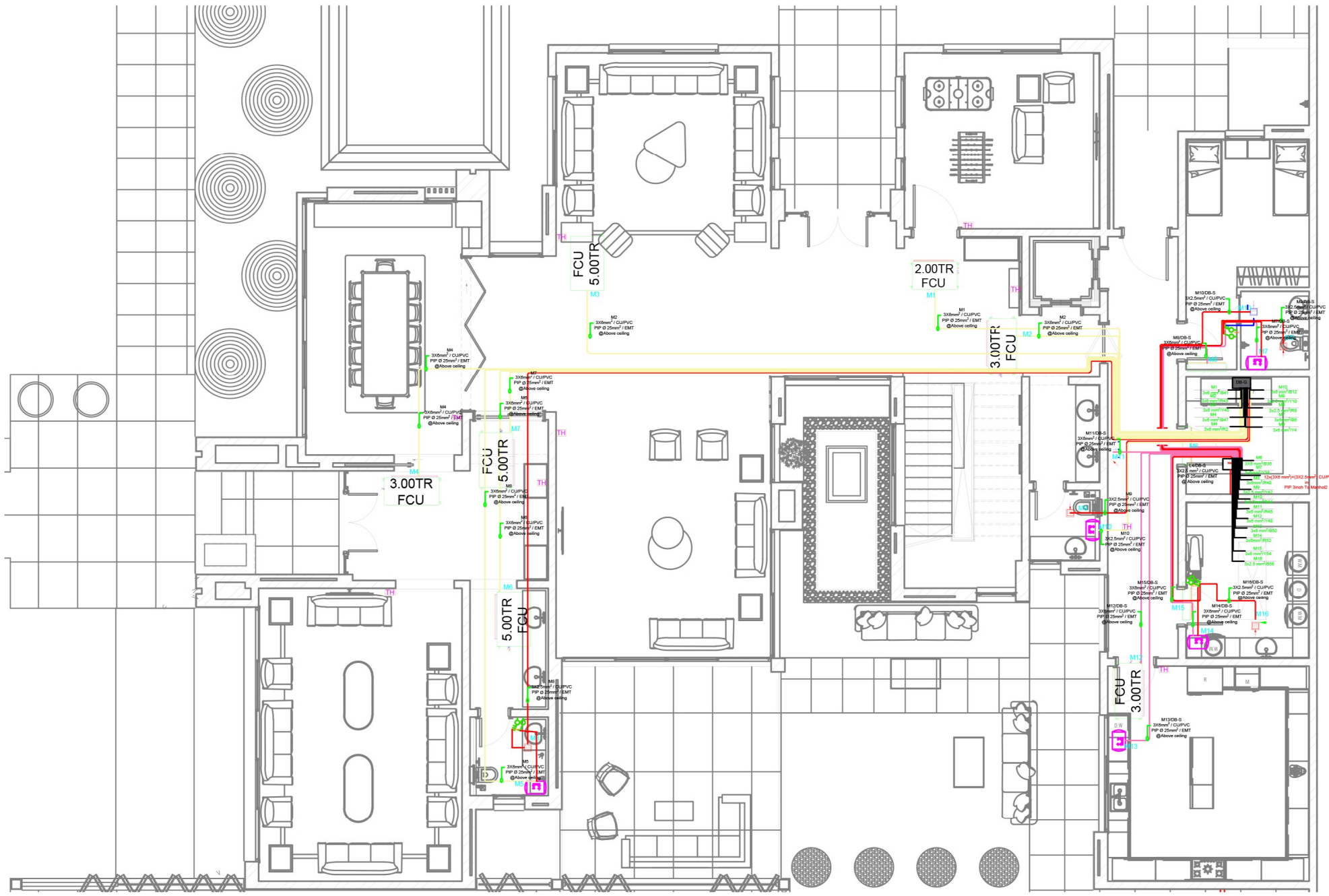
Electrical



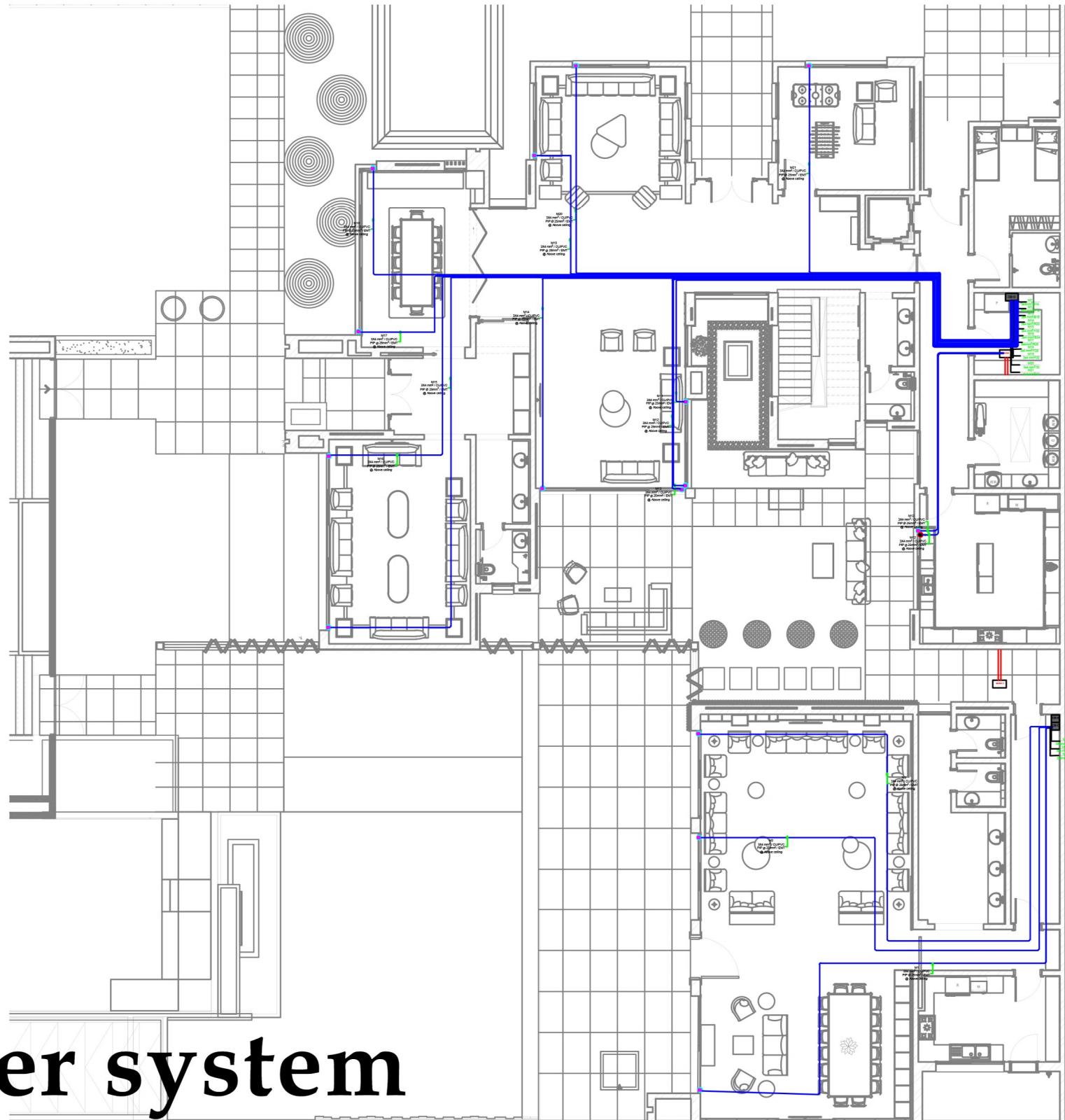
low current



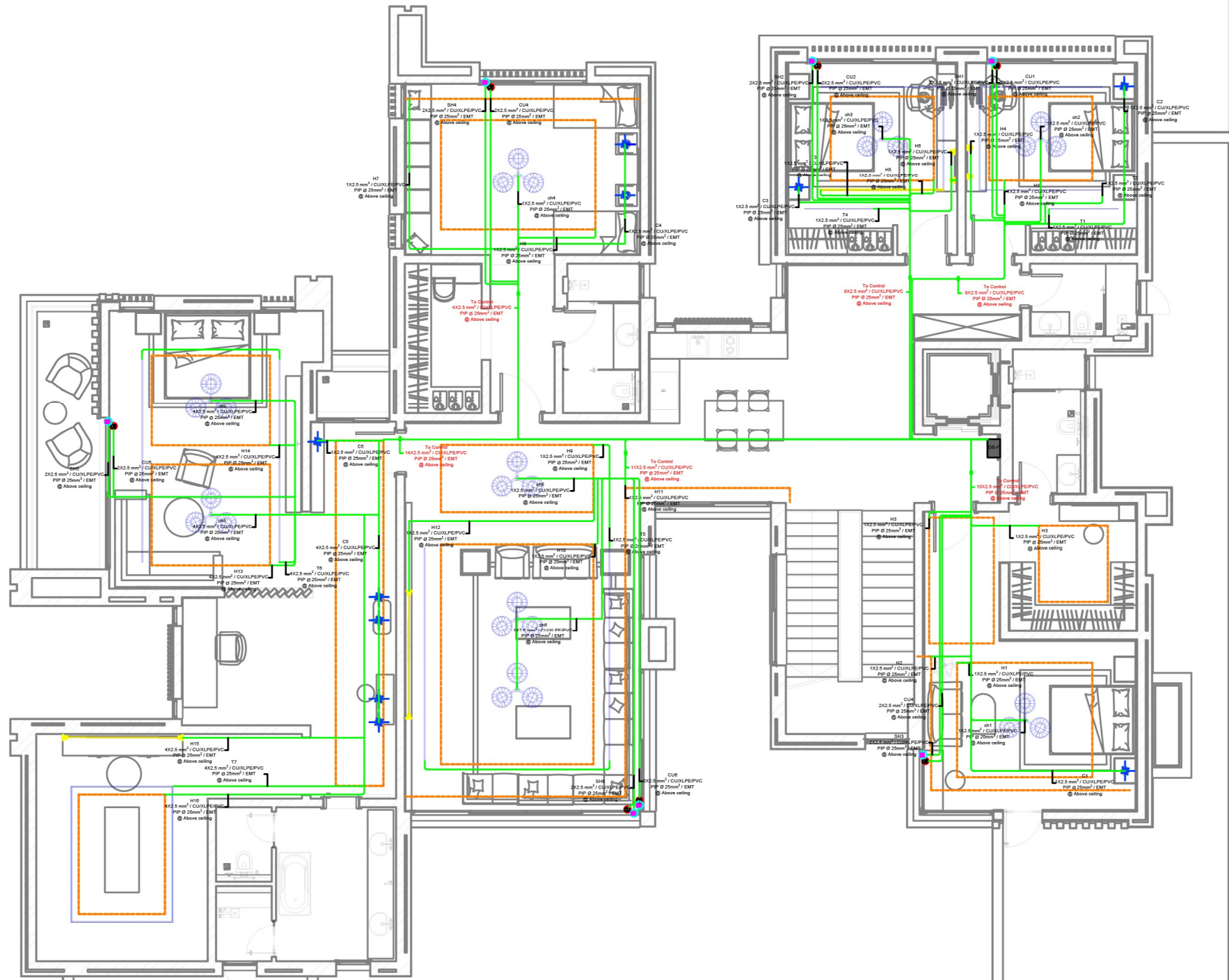
power system



mec system



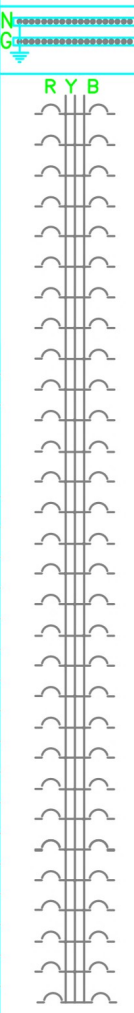
shatter system



lighting system

PANELBOARD LOAD SCHEDULE

DESCRIPTION	CONDUIT (mmØ)	WIRE (mm ²)	PHASE LOAD (VA)			BREAKER RATING		CKT. No.	N	G	CKT. No.	BREAKER RATING			PHASE LOAD (VA)			WIRE (mm ²)	CONDUIT (mmØ)	DESCRIPTION
			R	Y	B	POLE	AMP					AMP	POLE	R	Y	B				
LIGHTING(L1)	25	2.5	600			1	16	1			2	20	1	1750			4	25	Socket(S22)	
LIGHTING(L2)	25	2.5		600		1	16	3			4	20	1		1750		4	25	Socket(S23)	
LIGHTING(L3)	25	2.5			600	1	16	5			6	20	1			2000	4	25	Socket(S24)	
LIGHTING(L4)	25	2.5	600			1	16	7			8	20	1	1500			4	25	Socket(S25)	
LIGHTING(L5)	25	2.5		600		1	16	9			10	20	1		1000		4	25	Socket(S26)	
LIGHTING(L6)	25	2.5			600	1	16	11			12	20	1			1000	4	25	Socket(S27)	
LIGHTING(L7)	25	2.5	600			1	15	13			14	20	1	500			4	25	Socket(S28)	
SPARE						1	16	15			16	20	1		1000		4	25	Socket(S29)	
Socket(S1)	25	4	1750			1	20	17			18	20	1			1000	4	25	Socket(S30)	
Socket(S2)	25	4		1500		1	20	19			20	20	1	2000			4	25	Socket(S31)	
Socket(S3)	25	4			750	1	20	21			22	20	1		500		4	25	Socket(S32)	
Socket(S4)	25	4	2300			1	20	23			24								SPARE	
Socket(S5)	25	4		2300		1	20	25			26									
Socket(S6)	25	4			2300	1	20	27			28	32	1		2800		6	25	AC (M1)	
Socket(S7)	25	4	2300			1	20	29			30	16	1			200	2.5	25	AC EXF(M2)	
Socket(S8)	25	4		750		1	20	31			32	16	1	200			2.5	25	AC EXF(M3)	
Socket(S9)	25	4			1500	1	20	33			34	32	1		2800		6	25	AC (M4)	
Socket(S10)	25	4	2000			1	20	35			36	16	1			200	2.5	25	AC EXF(M5)	
Socket(S11)	25	4		2000		1	20	37			38	32	1	2800			6	25	AC (M6)	
Socket(S12)	25	4			2000	1	20	39			40	32	1		1500		6	25	Water Heater(M7)	
Socket(S13)	25	4	1000			1	20	41			42	32	1			2800	6	25	AC (M8)	
Socket(S14)	25	4		2000		1	20	43			44	16	1	200			2.5	25	AC EXF(M9)	
Socket(S15)	25	4			2000	1	20	45			46	16	1		200		2.5	25	AC EXF(M10)	
Socket(S16)	25	4	1750			1	20	47			48	32	1			2800	6	25	AC (M11)	
Socket(S17)	25	4		1500		1	20	49			50	32	1	2800			6	25	AC (M12)	
Socket(S18)	25	4			1500	1	20	51			52	32	1		1500		6	25	Water Heater (M13)	
Socket(S19)	25	4	1500			1	20	53			54	32	1			1500	6	25	Water Heater (M14)	
Socket(S20)	25	4		1500		1	20	55			56	32	1	200			6	25	AC EXF (M15)	
Socket(S21)	25	4			1250	1	20	57			58	20	1		200		4	25	shutter (M16)	
												20	1			200	4	25	Curtain (M17)	
14400 12750 12500									11950 13200 11700											



Panel: <u>DB-SERVER</u>	BUS R: <u>26350 VA</u>	Main Breaker: <u>125 A</u>
Service: <u>380/220V, 3-PH, 4WIRE, 60HZ</u>	BUS Y: <u>26000 VA</u>	Feeder Entry: <u>TOP ENTRY</u>
Enclosure: <u>IP 42</u>	BUS B: <u>24200 VA</u>	Feeder Size: <u>4x70mm2+35mm2 E CU/PVC CABLE</u>
<u>Ground FLOOR</u>	TOTAL: <u>76550 VA</u>	Source: <u>MDB2</u>
I. Capacity: <u>16 KA</u>		

Lighting DEMAND FACTOR : <u>100%</u>	Socket DEMAND FACTOR : <u>50%</u>	Mech DEMAND FACTOR : <u>100%</u>
Lighting DEMAND LOAD : <u>4.2 KVA</u>	Socket DEMAND LOAD : <u>29.6 KVA</u>	Mech DEMAND LOAD : <u>19.627 KVA</u>

panel load

DEMAND LOAD : 65 KVA
 20% SPARE LOAD : 78 KVA
 DEMAND LOAD CURRENT : 94 AMPS.